



Want your picture to appear here?
Send it to:
youthlibrarian@brentwoodlibrarynh.org

2024 APRIL NEWSLETTER

MARY E. BARTLETT
MEMORIAL LIBRARY

CONTACT

BRENTWOODLIBRARYNH.ORG
22 DALTON RD. BRENTWOOD NH
INFO@BRENTWOODLIBRARYNH.ORG
603-642-3355

HOURS

MONDAY: 2PM-7PM
TUESDAY: 9AM-6PM
WEDNESDAY: 9AM-6PM
THURSDAY: 9AM-6PM
FRIDAY: 9AM-1PM
SATURDAY: 9AM-1PM

Eye Spy...

... an interesting new display

See if you can find these displays when you are in the library. FYI - Many have great takeaways!



Your Support Matters

Help Enhance MEB Library's Amphitheater Experience!

The MEB Library Friends' Group is seeking donations of themed raffle baskets to raise funds for essential additions to the community amphitheater space such as sunshades, cushions, and tables/chairs.

Your generosity will play a crucial role in creating a space that fosters connection and inspires a love for literature and community.

To ensure the success of this fundraiser, we kindly ask for donations of handmade or newly purchased items, grouped into a basket or other suitable container, delivered to the library during April. Raffle tickets will be sold beginning on May 1st.

Thank you for your consideration. If you have any questions, please reach out.

With gratitude, Janice (on behalf of the MEB Friends)



MONDAY
2-7PM

TUESDAY
9AM-6PM

WEDNESDAY
9AM-6PM

THURSDAY
9AM-6PM

FRIDAY
9AM-1PM

SATURDAY
9AM-1PM

1
FRIENDS OF MEB FUNDRAISER
THE OVEN - EPPING
4PM-9PM

2

3
SOLAR ECLIPSE GLASSES CRAFT
3:30PM-5PM



4
BABY PLAY TIME
9:30-11AM
EVERY THURSDAY
PINHOLE ECLIPSE VIEWER WORKSHOP
4PM

5



8

SOLAR ECLIPSE
TRUSTEE MEETING
6PM

9

10
THE HOLOCAUST: ONE FAMILY'S STORY
6PM

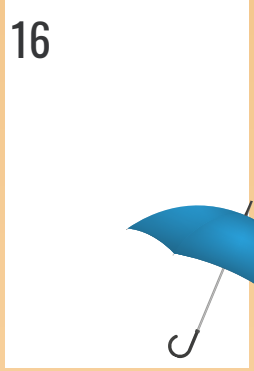
11
LEGO CLUB
3:30PM-5PM



12

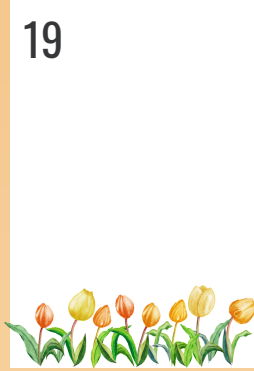
13

15
FRIENDS MEETING
6:30PM



17

18
PRESCHOOL YOGA
11AM
ADULT BOOK GROUP
6PM



20

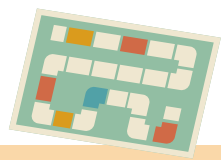
22
SCHOOL VACATION WEEK
T(W)EEN SNACK & SHARE
3PM



23
DROP-IN CRAFT: DOODLE-PALOOZA
ALL DAY

24
BIG KID YOGA
1PM

25
GAMES & PUZZLE DAY
ALL DAY



26

27



30

31


@BRENTWOODLIBRARYNH
BRENTWOODLIBRARYNH.ORG
22 DALTON RD, BRENTWOOD NH
INFO@BRENTWOODLIBRARYNH.ORG
603-642-3355



MARY E. BARTLETT MEMORIAL LIBRARY
22 DALTON RD. BRENTWOOD NH * BRENTWOODLIBRARYNH.ORG * 603-642-3355

- BABY PLAY TIME** Looking to get out of the house now that winter has settled in? This weekly, open play time for babies and caregivers takes place in the cozy kids' room every Thursday morning. Older siblings welcome too!
EVERY THURSDAY @9:30-11AM
- ECLIPSE GLASSES CRAFT** Come decorate your eclipse glasses in the kids' room! No registration needed.
WED 4/3 @3:30-5PM
- PINHOLE ECLIPSE VIEWER** Have you heard about the solar eclipse on April 8th?! Come learn about this unique phenomenon and make a pinhole viewer to take home. **This program is for students in grades 2-5 only.** Bring your own cereal box and we'll provide the rest of the materials. Space is limited and registration is required, sign up here: <https://forms.gle/9HHRCDiWS2znyNs58>
THUR 4/4 @4PM
- THE HOLOCAUST: ONE FAMILY'S STORY** April is National Holocaust/Genocide Awareness Month. Join us to hear stories of how the Nazi Holocaust affects generations that followed? This special event is presented by the granddaughter of multiple Holocaust survivors.
WED 4/10 @6PM
- LEGO CLUB** Come build with legos in the kids' room starting after school until 5pm. Bring a friend and your creative ideas!
THU 4/11 @3:30-5PM
- LITTLE KIDS YOGA** Join us for preschool yoga in the kids' room! This 45 minute class, taught by Rachel Brown, will celebrate Earth Day! No yoga mat or materials are necessary. This class is free but registration is required. Sign up here: <https://forms.gle/3WPVskFLXw4rJGTw6>
THUR 4/18 @11AM
- ADULT BOOK GROUP** Grab a friend and come join our adult book club! Books will be chosen each month by the group. The book for April is *Small Town, Big Oil* by David W. Moore. Stop by the library to pick up a copy of the book.
THUR 4/18 @ 6PM

APRIL BREAK PROGRAMS

- T(W)EEN SNACK & CHAT** All the fun of a book group (snacks! chatting!), with none of the pressure! Come talk about books you've read and loved, and bring along any ideas for fun stuff you'd like to see at the library! This new program is for people in **grades 5-8**. Let us know you're coming so we have enough food: <https://forms.gle/3bTTcdR81UWExTRJ7>
MON 4/22 @3PM
- DOODLE-PALOOZA** Drop in for some doodling fun in the kids' room. We'll have fun drawing prompts and lots of drawing materials.
TUE 4/23 ALL DAY
- BIG KIDS YOGA** Join us for a yoga practice taught by Rachel Brown celebrating Earth Day! This 45 minute class is for children in Kindergarten through grade 5. No yoga mat or materials are necessary. This class is free but registration is required. Sign up here: <https://forms.gle/4KRNQWxePTJQjbaw6>
WED 4/24 @1PM
- BOARD GAMES & PUZZLES** Bring a friend and come play games at the library. Or work on a puzzle. Did someone say "snacks"? Yes, snacks will be served!
THU 4/25 ALL DAY!

Contact Us!

INFO@BRENTWOODLIBRARYNH.ORG
603-642-3355

Follow Us!

@BRENTWOODLIBRARYNH ON
FACEBOOK & INSTAGRAM

FRIENDS OF MEB APRIL 2024

The Friends of the Library are pleased to be able to offer a variety of discount recreation passes as a result of our fundraising efforts. We encourage you to use them to make this expense worthwhile. Underutilized passes do not get renewed. On the other hand, we are happy to explore additional passes at the request of patrons. You can find the full list of available passes on the library's website under Resources: <https://www.brentwoodlibrarynh.org/museum-passes.html>.

The Friends have added a new discount recreation pass to the Isabella Stewart Gardner Museum in Boston. The pass provides \$5 admission (under 17 is free). The museum recommends reserving your spot ahead of your visit to ensure entry. The museum features historical collections of paintings, sculpture, books, furniture and many other objects. "The New Wing's modern exhibition space and performance hall host a steady stream of contemporary artworks, music, dance, and more." Enjoy the architecture and designs of the varied themed rooms and be sure to explore the courtyard and gardens. In the courtyard, you will find hanging nasturtiums in early April and other spring blooms through May. Visit the website for more information: <https://www.gardnermuseum.org>.

Art lovers may already know the Isabella Stewart Gardner Museum is next to the Museum of Fine Arts. I am told you can easily visit both on the same day. Reserve a pass at the library for \$10 general admission for 2 people. Dress Up, an exhibit "including 20th- and 21st-century clothing, jewelry, accessories, illustrations, and photographs" will begin 4/13. Also beginning 4/13, "Songs for Modern Japan: Popular Music and Graphic Design, 1900-1950" explores how sheet music covers provide a window into Japanese society and culture during this period of immense transformation." Gardeners will want to view Art in Bloom 4/26-28 featuring "beautiful interpretive floral arrangements of 45 artworks." As you can see, art museums are more than old paintings and ancient artifacts, although those are important components as well. The MFA website offers more detail: <https://www.mfa.org>.

The Museum of Science in Boston is a popular school vacation destination. The library discount pass provides 50% off 4 people Exhibit Hall admission. While you are encouraged to reserve your pass early, feel free to call to check on last-minute availability. I mentioned plants and flowers for the two museums above so it seems appropriate to share the Garden Walk & Insect Zoo and The Rock Garden. The museum abounds with interactive displays with themes such as math, climate, engineering, physics, and light. Visitors can also learn about artificial intelligence, dinosaurs, space, vaccines, habitats and transportation. Find a full list of exhibits on the website: <https://www.mos.org>.

Our next meeting is scheduled for Monday, April 15 at 6:30 pm at the library. Watch our Facebook page for updates: <https://www.facebook.com/FriendsofMEBLibrary>.



Respectfully submitted by,
Jessica Paul
Friends Secretary

MARCH HIGHLIGHTS



Engineering Structures



Amphitheater Progress



1000 Books Before Kindergarten!

MEB STAFF SUGGESTIONS

JANICE



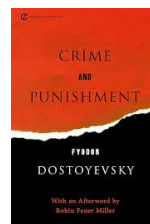
KIKI



JOYCE



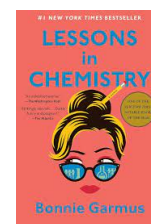
MARY



TANYA



MARLEY



SHAYLA

